



# 24U FM Bench Assistants

---

Version 1.3

## The Way to Insert FM Bench Script Steps into Your Solution

We can imagine that your solution could count probably tens or hundreds scripts and in order to identify bottlenecks is necessary to measure all of them. And to measure all scripts you will need to adjust all of them.

It seems like a lot of manual work but we believe that everything can be optimize including how to adjust all your scripts efficiently. So we start to looking for a tools that can help you.

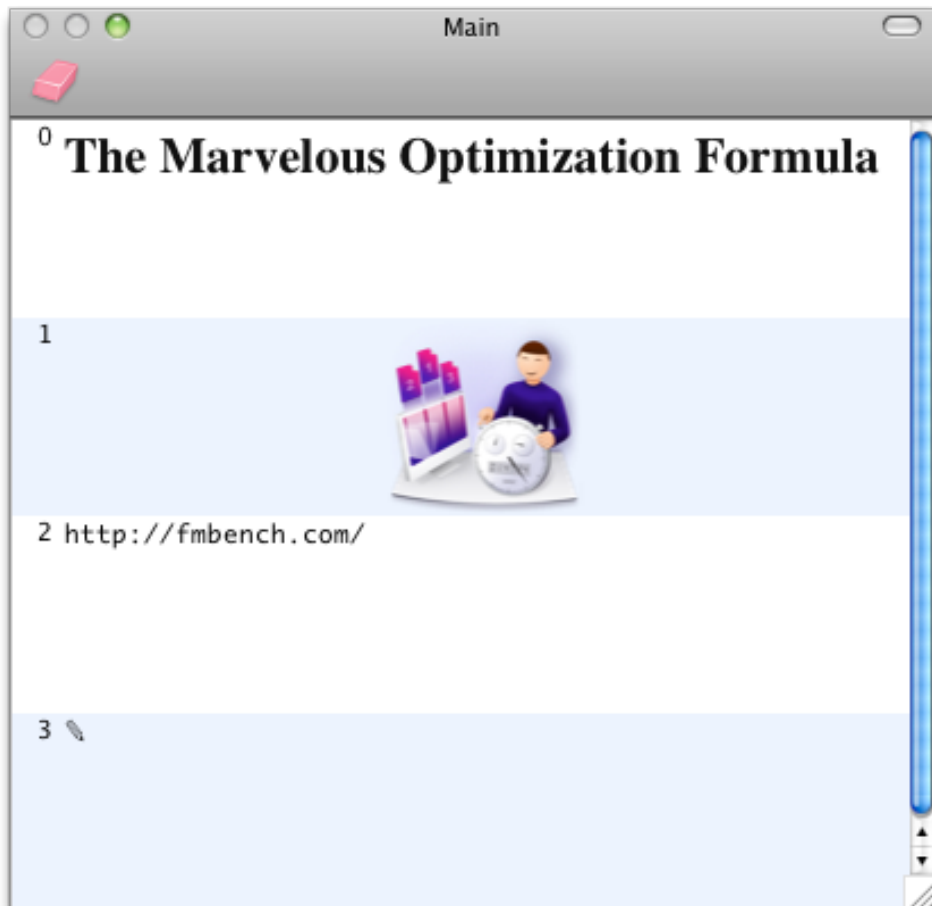
At the first we have prepared 24U FM Bench Detective, there is set of script steps that you can just copy to your own solution.

Then we found a simplification to reduce this plenty work with editing the all scripts. From dozen applications we picked up those that can effectively help you to come trough.

## PTHPasteboard

source [PTH Consulting](#)

The best and most mature multiple pasteboard program for OS X. How often have you copied something only to find that you need it a few minutes later but you've already copied another item? PTHPasteboard PRO watches you while you work and keeps a copy of any items that you have copied to your pasteboard.



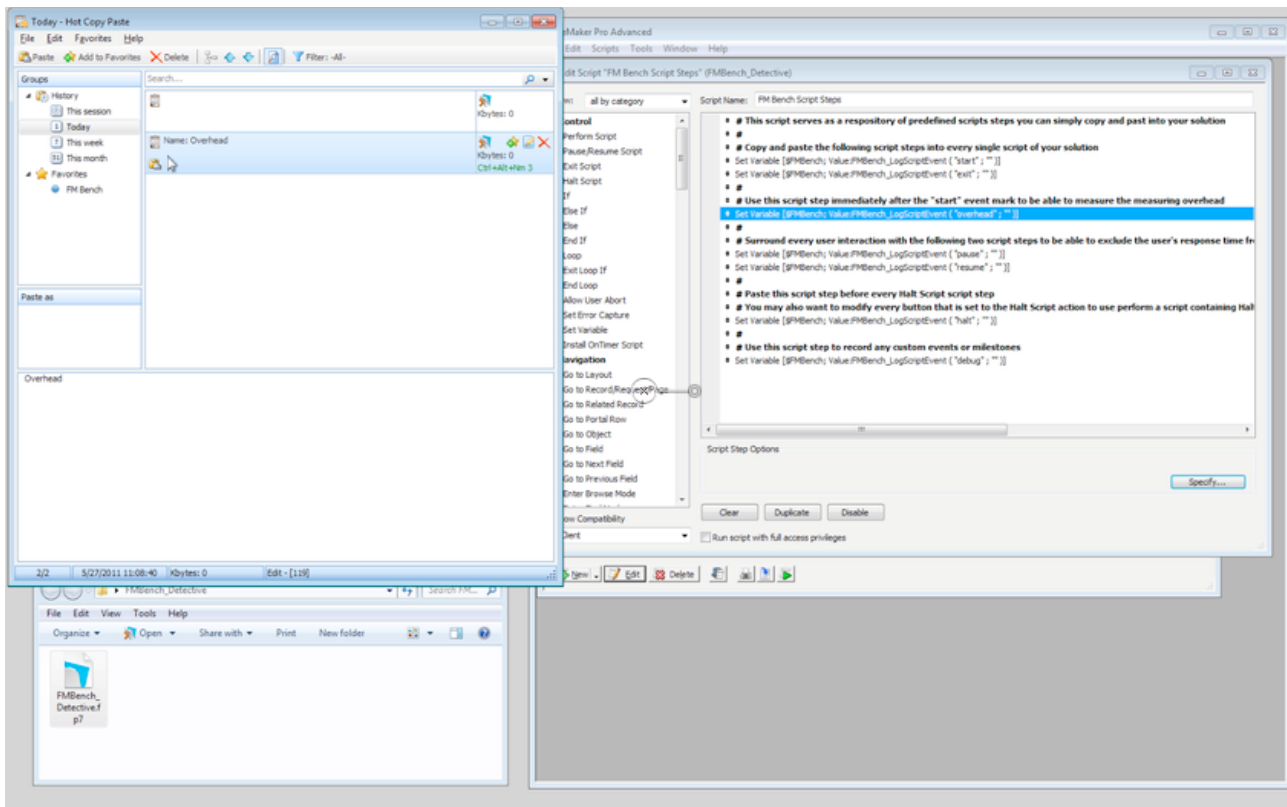
*Copy of example items stored in the PTHPasteboard clipboard*

Our experience is available on <http://fmbench.com/howto/pthpasteboard>.

# Hot Copy Paste

source [Comfort Software Group](#)

All versions of Windows can cut, copy and paste information such as text and pictures from one program into another. Windows Clipboard stores your information, be it a picture or a section of text from a word processor, in a temporary storage, enabling you to move that snippet of information from one place to another.



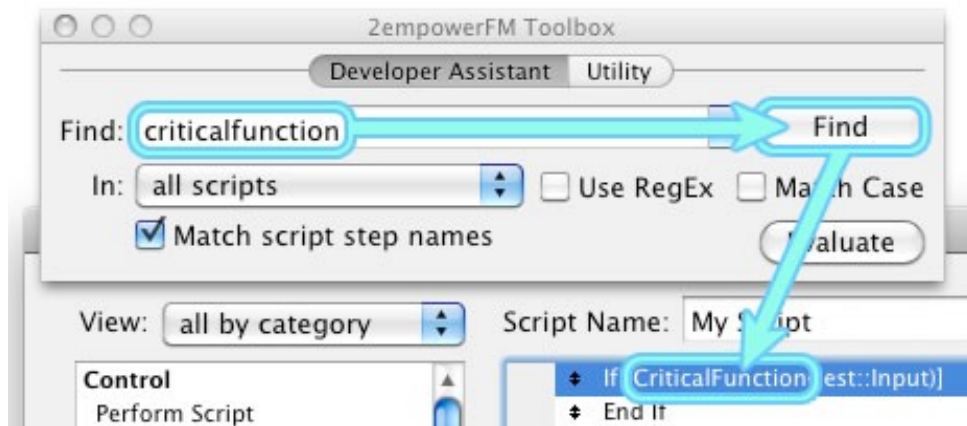
*FM Bench Script Steps stored in Hot Copy Paste clipboard*

Our experience is available on <http://fmbench.com/howto/windowsclipboard>.

## Developer Assistant

source [Dracoventions](#)

Developer Assistant is a plug-in for the FileMaker® Pro database that helps FileMaker developers save time and be more productive.



*Finding term "criticalfunction" across all scripts*

Developer Assistant helps you:

- Find all scripts containing a search term. Individual scripts automatically open to highlight the next line that matches a text or regular expression search term. Searches may also be performed within a single script.
- Find all database fields containing a search term. The search includes not just field names, but auto-enter data, validation calculations, and any other text associated with each field. This search is performed in the "Manage Database" window and requires FileMaker Pro Advanced.
- Find tables by name in the table relationships graph in the "Manage Database" window.

Our experience is available on <http://fmbench.com/howto/develoer-assistant>.